



**广运宏拓**  
GUANG YUN HONG TUO

# 河北广拓玻璃钢有限公司

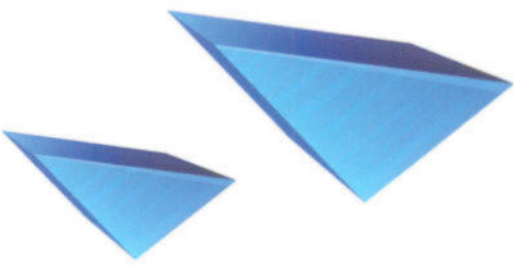
HEBEI GUANGTUO FIBERGLASS CO., LTD



# COMPANY PROFILE

Hebei Guangtuo Fiberglass Co., Ltd. is located by the beautiful Hengshui Lake in the national wetland nature reserve. Beijing The Jiu Railway, Shide Railway, Daguang Expressway, and Shihuang Expressway pass through the territory, with convenient transportation and developed communication.

Our company is a member of the China Composite Materials Industry Association and specializes in the production of fiberglass equipmentNew technology enterprises. The main products include: ship and offshore oil pipeline production lines; Transformer, transformer bushing and electrical Power tube winding machine; Gas cylinder winding machine; Fiberglass pressure vessel membrane shell production line; GRE pipe winding machine; High pressure pipe Road production line; Continuous pipeline production line; Micro controlled fiberglass sand filled pipeline production line and process pipeline production line; Telegraph Pole Production lines, cable conduit winding equipment, vertical and horizontal storage tank winding equipment, septic tank winding equipment, heating pipes Insulation pipe winding equipment; Fiberglass pultrusion equipment and various specifications of molds. The company has a large number of employees engaged in glass production Senior mechanical engineer, fiberglass process engineer, electrical engineer, and software engineer in the steel industry. Established a A composite R&D team specializing in the development, innovation, and manufacturing of fiberglass equipment. The company insists on going to school The path of enterprise alliance, long-term cooperation with Tsinghua University and Aerospace Numerical Control. Developed the first domestically produced fiberglass equipment The control system has successfully produced a high-precision four-dimensional winding machine; The control system is in the form of an integrated machine, replacing transmission Unified form of industrial control computer. Micro controlled wet sand filled fiberglass pipeline winding equipment, with a leading technical level in the domestic industry Status. Provide high-precision winding machines for aerospace research institutes and foreign-funded enterprises. The equipment currently produced is sold throughout the country It has gained a good reputation by exporting to multiple countries and regions overseas.





# 高精度船舶和海洋石油管道生产线

管道缠绕机及配套设备：管道、管件缠绕机和脱模机、磨锥机、管道和管件试压机

直径范围：DN25-DN600；DN650-DN1200

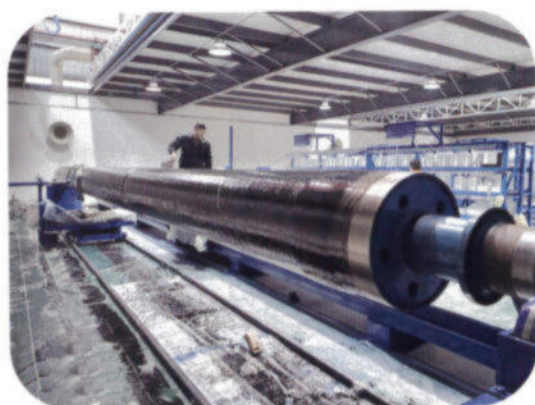
最大长度：12000mm



脱模机  
Demoulding machine



船舶和海洋石油管道  
Vessel and Marine pipeline



自动刮胶系统  
Automatic resin scraping system



缠绕机  
Winding machine



磨锥机  
Cone grinding machine





管道试压机 Pipe pressure test machine



管件脱模机  
Fittings demoulding machine



水切割设备  
Water cutting equipment



自动配胶系统  
Automatic resin system



弯头缠绕机  
Elbow winding machine

## High precision Vessel and Marine Pipe Production Line

Pipe winding machine and supporting equipments: Pipe and Fittings Winding Machine and Demoulding Machine, Cone grinding Machine, Pipe and Fittings pressure test machine

Dia Range: DN25–DN600mm; DN650–DN1200mm

Max Length: 12000mm

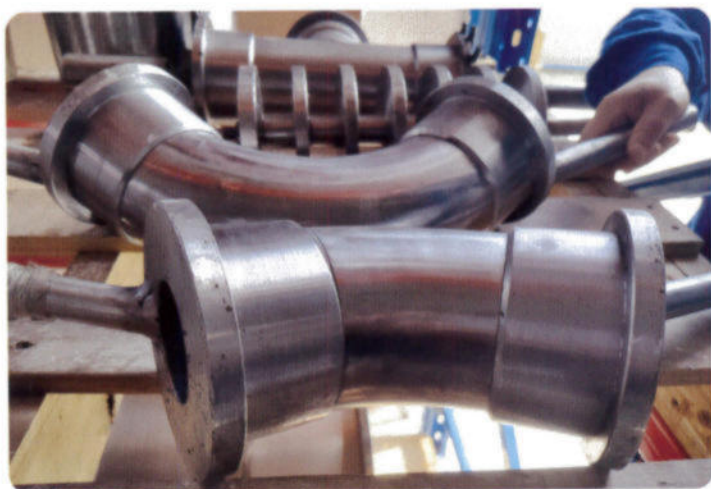


# 管道及管件模具

直径范围：DN25-DN1200mm

最大长度：12000mm

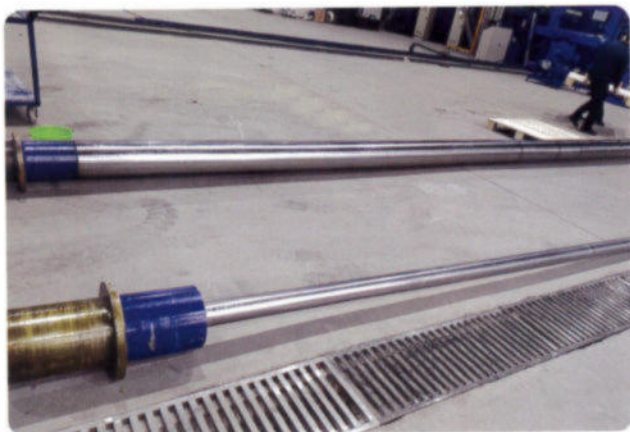
法兰、弯头、变径、三通等模具直径范围：DN25-DN1200mm



弯头模具 Elbow mould



弯头模具 Elbow mould



管道模具 Pipe mould



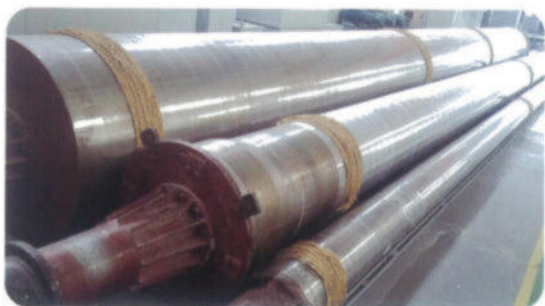
高压管模具 High pressure pipe mould

## Pipe and Fittings Moulds

Dia Range: DN25–DN1200mm

Max Length: 12000mm

Flange、Elbow、Reducer、Tee' s Mould Dia Range: DN25–DN1200mm



钢制模具 Steel mould



三通短节模具  
TEE short section mould



GRE 管道模具 GRE pipe mould



GRE 管道模具成型  
GRE pipe moulding





龙门式电力套管缠绕机  
Gantry type electric bushing winding machine



互感器套管缠绕机  
Transformer bushing winding machine

## 高精度龙门式套管缠绕机

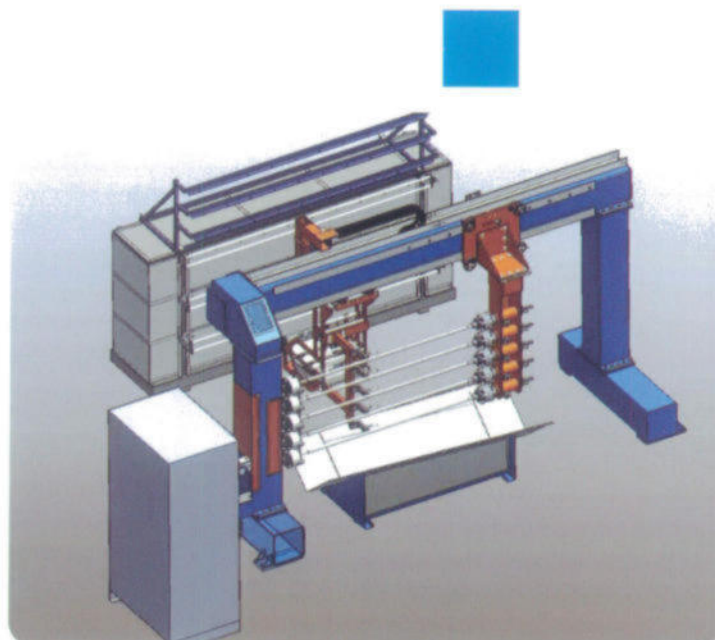
直径范围：DN10-DN1000mm

最大长度：6000mm

缠绕角度：45° -90°



变压器套管缠绕机  
Transformer bushing winding machine



套管缠绕机  
Casing winding machine



### High precision gantry type bushing winding machine

Dia Range: DN10–DN1000mm

Max Length: 6000mm

Winding angle: 45° –90°



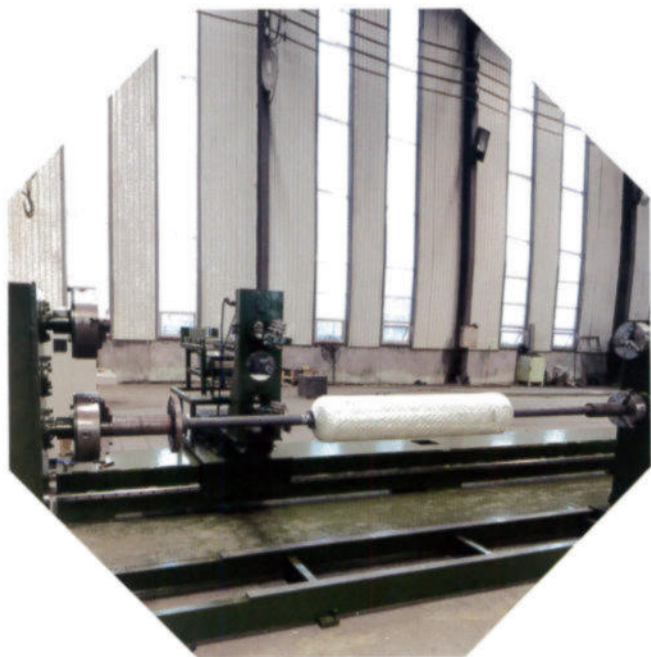
# 水处理罐（气瓶）缠绕机

生产直径范围：DN200-DN1600

生产产品长度：430mm-2150mm

缠绕角度范围：0° —90°

可单轴或多轴缠绕



四维气瓶缠绕机

Four-dimensional cylinder winding machine



龙门式气瓶缠绕机

Gantry type cylinder winding machine



### **Water treatment tank (gas cylinder) winding machine**

Water treatment tank (gas cylinder) winding machine

The range of diameter: DN200–DN1600

The length of the product: 430mm–2150mm

The range of winding angle:  $0^{\circ}$  —  $90^{\circ}$

The machine can achieve single or multi axis simultaneous winding



# 特殊行业及个性化设计方案

按用户要求设计制造

变角度缠绕

可实现平端缠绕

多轴同时缠绕

应用于电力、衬套、辊、复合管等特殊行业的需要

## Special industrial and personalized design proposal

Designed and manufactured as per

customer' s requirement

Variable Angle winding

Flat end winding

Multi mandrel simultaneous winding

Used in special industries such as power,  
housing, rollers, composite pipes, etc.





6轴缠绕机  
Six-axis winding machine



椎体等壁厚缠绕机  
Cone equal wall thickness winding machine



电力套管缠绕机  
Electric casing winding machine



桥塞缠绕机  
Bridge plug winding machine



# 膜壳缠绕机

生产直径范围：2.5英寸—8英寸，可根据客户要求制作。

生产长度范围：6—9.5m，可根据用户要求制作。

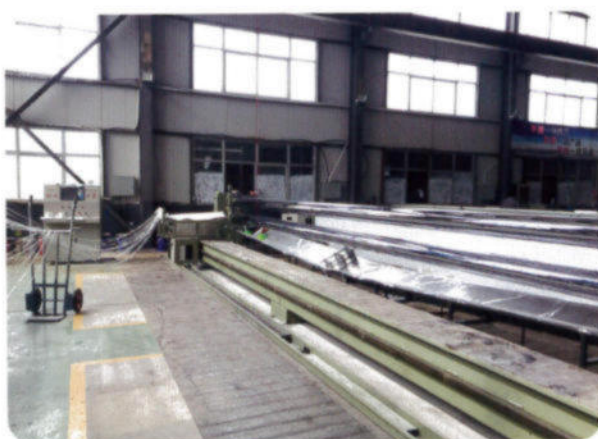
缠绕角度范围：45° —90°

可实现单轴或双轴同时缠绕

膜壳固化温度范围：60° —130°

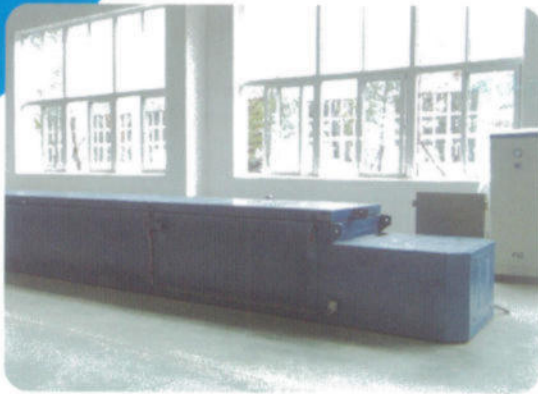
膜壳允许工作温度：-10° —+50°

膜壳压力范围：2.1Mpa—6.9Mpa



倒角机 Chamfering machine

水处理膜壳缠绕机  
Water treatment membrane shell winding machine



## Membrane winding machine

The range of diameter: 2.5" –8" , production as per customer' s requirement.

The range of length: 6–9.5m, production as per customer' s requirement.

The range of winding angle: 45° —90°

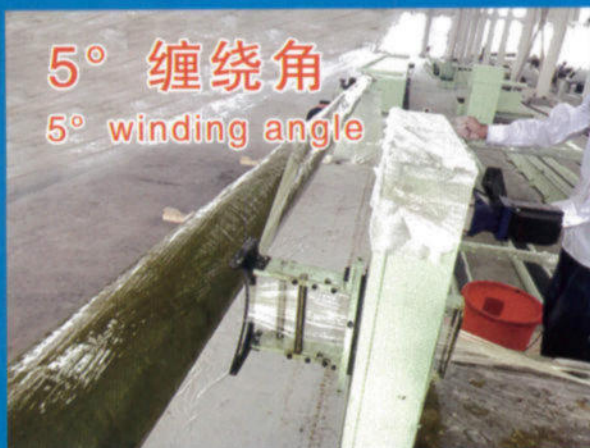
The machine can achieve single or double axis simultaneous winding

The range of curing temperature for the membrane: 60° —130°

Allowable working temperature for the membrane: –10° —+50°

The range of pressure for the membrane: 2.1Mpa—6.9Mpa







## 电线杆设备

生产产品最大直径：350mm

生产产品长度：10000–12000mm

缠绕角度范围：0° —90°

可实现锥体缠绕及其它异形缠绕

### FRP Telegraph pole production equipment

The maximum diameter of the product produced: 350mm

The length of the product: 10000–12000mm

The range of the winding angle: 0° –90°

The equipment can make cone winding and other irregular winding





连续缠绕设备 CFW pipe winding machine

## 连续缠绕玻璃钢管道生产线

主轴转速：0-20rpm

直径范围：DN300-4000 mm

### CFW Pipe Production Line

Speed of main spindle: 0-20rpm

Dia range: DN300-4000 mm



内  
固  
化  
高  
压  
管  
道  
缠  
绕  
机



Internal curing high pressure pipe winding machine



高压管道缠绕机

High pressure pipe winding machine



高压管生产线

High pressure pipe production line

## 环氧高压玻璃钢管道生产线

### 产品基本指标

管道直径：DN40—DN600mm

标准长度：4000mm—12000mm

标准耐压：3.5Mpa——25Mpa

连接方式：API螺纹连接

执行标准：中国石油天然气行业标准

设备产量：以DN100mm 12Mpa管道为例，4根/小时.台

介质温度：最高80——120℃

固化形式：蒸汽内加热固化

### GRE Epoxy High Pressure Pipe Production Line

Product basic indicators

Pipe dia: DN40—DN600mm

Standard length: 4000mm—12000mm

Proof pressure: 3.5Mpa——25Mpa

Connect style: API threaded connection

Executive standard: Chinese oil and gas industry standard

Equipment output: For example of pipe DN100mm 12Mpa, 4pcs/hour/equipment

Medium temperature: up to 80—120 ° C

Curing form: internal steam heating



## 收缩模具

可收缩直径范围：DN2400—DN3000；DN3200—DN4000

模具长度范围：6000mm——8000mm

可生产罐体内衬和结构层，节省投资。





## **Collapsible mandrel**

The range of diameter for the collapsible mandrel: DN2400–DN3000;  
DN3200–DN4000

The range of length for the collapsible mandrel: 6000mm–8000mm

The mandrel can be used to make both tank liners and structural layers, which saves investment.



## 湿法夹砂管道设备

计算机控制一体机：液晶显示器；全功能键盘；4路位置反馈输入；1个MODBUS IO接口；1个USB接口；2个网络接口。

代替传统的工控机和板卡，方便于运输搬到及现场制作设备，轻便、简单、安全可靠、故障率低等优点。

夹砂层厚度和树脂含量由计算机控制。

环向缠绕及滚压同时进行，增加密实度，提高效率。



管道缠绕机 Pipe winding machine



### **Wet sand-adding pipe production equipment**

Computer controlled integrated machine: LCD, full-functional keyboard, 4-way position feedback input, 1 MODBUS IO interface, 1 USB interface, 2 network interface. Replacing traditional industrial computer and boards, it is more convenient for transportation and on-site production of equipment, and it has more advantages, such as light weight, simple, safe and reliable, low fault rate etc. The thickness of sand-adding layer and resin content are controlled by the computer.

Hoop winding are carried out with roller pressing simultaneously, which can increase the compactness so as to raise the efficiency.





地址：河北省衡水市枣强县东外环兴园中街东头路南

电话：13166576543 18832816611

网址：[www.hbgtblg.com](http://www.hbgtblg.com)

邮箱：[13166576543@163.com](mailto:13166576543@163.com)

Address: Xingyuan Middle, East Outer Ring Road, Zaoqiang County,  
Hengshui City, Hebei Province Street East Head Road South

Phone: 13166576543 18832816611

Website: [www.hbgtblg.com](http://www.hbgtblg.com)

Email: [13166576543@163.com](mailto:13166576543@163.com)